






# RECYCLED SQUARE PILLOW ROYAL VELVET

## Recycled Square Pillow Royal Velvet




 **Material**  
Cover: 100% post-consumer polyester (100% rPET)  
Inner bag: 100% recycled polyester non-woven

 **Filling**  
100% recycled polypropylene


 **Coating**  
EN1021-1 (Cigarette)

 **Weight product**  
1.15 kg e

 **Dimensions**  
50 x 50 cm e


 **Weight product + packaging**  
1.5 kg e

 **Dimensions packaging**  
51.5 x 25 x 10 cm

 **Washing instructions**

- Wash cover at handwash only
- Do not bleach
- Do not tumble dry
- Iron on the lowest temperature
- Do not dry clean

**# Batch number**  
In the cover, close to the zipper on a white label.

 **Recommendations**

- Do not poke with sharp objects, this might cause the fabric to tear, exposing the filling
- Excess exposure to sunlight may damage the fabric and cause discolorations

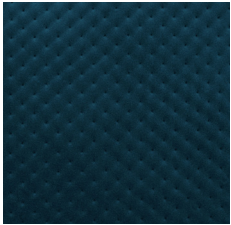
## HOW TO ENJOY YOUR PRODUCT TO THE MAX

### Keeping it clean

To clean the cover from dust and dirt, spray it with cold water (30°C) or wipe it with a soft cloth soaked in water.

For heavily soiled areas lightly scrub the area with a sponge soaked in mild detergent and rinse with cold water.





Super soft pilling-resistant fabric



Easy to clean



Made from recycled materials

